

## Learning Disability Partnership Board (LDPB) 13<sup>th</sup> March 2009

### Present

Olive Halliwell	-	ACE
Dave Clarke	-	NUGENT CARE
Melanie Chapman	-	MLDP
Alison Perry	-	Social Worker
Rosanne Patterson	-	WLCT
Bridget Whittell	-	DAS
Andrea Grealley	-	DAS
Sue Seager	-	DAS
Peter Harrison	-	ALWPCT
Susan Bannister	-	Wigan & Leigh People First
Julie Davies	-	Wigan & Leigh People First
Louise Sutton	-	DAS (co-chair)
Lesley Teasdale	-	Family Forum
Paula Daley	-	Housing Options Officer
Stephanie McComb	-	Ashton. Leigh, Wigan Community Heathcare
Liz Parkinson	-	DAS
Abida Niaz	-	GMP Wigan
Carol Williams	-	IAS
K Smalley	-	Family Forum (co-chair)
Bridget Hollingsworth	-	DAS
Angela Seddon	-	DAS
Anthony Hobson	-	DAS

### Apologies

Steve Sargent	-	Housing Strategies
Raveen Walton	-	DAS
Lesley Austin	-	
Graham Frost	-	DAS
Terry Mann	-	DAS
Lynne Hamnett	-	Family Forum
Michelle Ryan	-	Family Forum
Julie Halsall	-	Family Forum
Marysia Welch	-	Family Forum

## Guidelines

The guidelines were reads out.

## Self Advocate Feedback

To encourage people to talk Self advocates were asked to think about three things they remembered from the last Partnership Board meeting.

The things people said fitted into 4 groups.

### **1. What people were pleased about;**

- WLPF visit to houses of parliament.
- The drama.
- Giving feedback
- Train trainers course
- Andrea's presentation
- Helped people on board

### **2. What people were worried about:**

Would embrace change for advocacy – to talk to embrace

Confused about what the PB money pays for

Confused about what is said at meeting

People sometimes getting minutes in advance

Sheila not able to attend Reflex Nightclub.

Action – BH to liaison with day services

Lots of people cannot go out in the evenings.

Only a few people understand what is happening

### **Action**

To look at the way the partnership board meeting works i.e. could we have smaller issue based groups

This will be the main theme for the next meeting

Who will organize courses for Self Advocates when Andrea goes?

### **Action**

To consider who will deliver this – BH & AS

### **Action**

Bridget and Olive to raise at the next contract framework meeting that we require providers within the framework to enable self advocates to participate.

### **3. Other Comments and Questions**

Going to Blackpool was good

Are day services not supporting in the evenings

How could we help people get out in the evening

Acknowledge that the PB has to discuss serious and complex issues

#### **4. Things To Do**

Ask Ken about traffic lights not having any sound

##### **Action**

Ken to follow up.

Wigan & Leigh Disability Forum are including transport as main agenda item

##### **Action**

Olive will raise the issue about traffic lights.

Easy read minutes

Not currently available in this format

However it was felt that enabling people to understand the issues are critical.

Easy read version remains important for other people in the borough with a LD.

##### **Action**

Structure of the board and meeting is the main agenda items at the next meeting.

We will also undertake an equality impact assessment at next meeting.

PCT document/5 Boroughs

Cannot feedback due to the inaccessible nature of the document.

Comments from Peter and Steph that this was a positive opportunity to comment on the service provided by 5 Boroughs.

##### **Action**

Ask 5 Boroughs to attend the meeting in May.

## Valuing People Now Feedback

Self advocates Council and Independent Sector reps attended.

Launched 19<sup>th</sup> Jan

Linked to Putting People First

Carers Strategy

Healthcare for All

Dementia Strategy

Aiming High

4 Guiding Principles

Rights

Independent Living

Control

Inclusion – people with complex needs, BME, ASD, families People with an LD still most likely to have their human rights restricted.

Personalisation

Having a life : Better Health

Having a life : Housing

Work Education and Getting a Life

(only 1 in 10 people with an LD are in paid employment)

Relationships and having a family

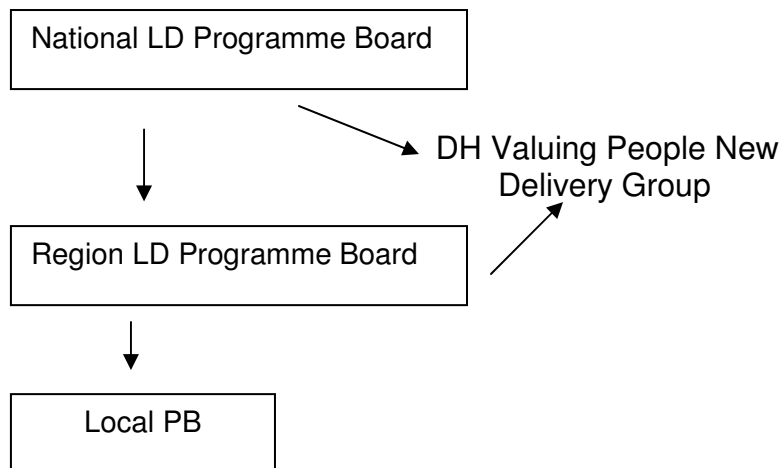
People at Citizens: Advocacy

Transport

Being safe

Access to Justice

Local Partnership Boards



Delivery Plan

-

effective leadership important

Make it happen for everyone and made it happen everywhere

Feedback from self advocates

Need an accessible version

Too much information

Too much Jargon

Very much from a carers point of view (personalization sub group)

**Action**

Can we have a single sheet to help us understand personalisation.

Felt on the outskirts (no secrets sub group)

Need good links with police

**Action**

To link big issues identified with the work of the Partnership Board.

## **Advocacy Sub Group Presentation**

Received the PATH

Got some money from LDDF

Helped set up 2 new posts – Black Minority Ethnic and Safeguarding Jobs

Promoted advocacy champions

Melanie Chapman took over from infopoint to support the

Advocacy Audit

Advocacy Audit Aims

What people thinks about in W&L

How does /// make outings better

Susan introduced the Research Team and explained how committed they were.

4 Focus groups have been established for family members, Staff, managers people with LDs

38 people in total took part.

### **What was found out?**

Most people know speaking up for people but limited understanding of different types of advocacy.

Quite a lot of clarification about what was available

Need to improve how we tell people about what sort of advocacy is available.

What steps people are using advocacy

People lack confidence and experience isolation.

No real choices and control

Knowing advocacy is available

Advocacy not always available

Conflict of interest

### **Over the next year Advocacy Sub Group will;**

- Develop an action plan from the audit findings
- Continue to support Wigan & Leigh People First and More than Words
- Develop more independent advocacy provision
- Invite more people to join group
- Introduce new checking systems to ensure we are achieving outcomes for people.
- Create a new 'PATH'

### **What we want**

Each sub group to have a champion

- Wider promotion of advocacy within sub group and other projects
- Other subgroups to ask for our support in developing advocacy.

## **Family Forum**

Been informed by new NWTDT that PBs will have to complete self assessments.

Assessments are not just tick boxes and will have to be agreed and signed off by self advocates and family members.

FF still not happy with the feedback given from past questions regarding personalized budgets.

We need more consultation and clarity

The FF have sent letters to BW and Mr Keith Cunliffe.

## **LD Housing Strategy**

Developed over 12 months with extensive consultation with staff, families, self advocates.

### **What Is In It?**

Tried to write it in an easy read and avoided Jargon.

Includes some inspirational success stories.

Action Plan what we will do in next 5 years.

Better access to information

Housing advice and planning

Use of technology.

Strategy looks at the national picture and how this will affect people in Wigan & Leigh.

Aim

To enable people to have greater choice and control over where they live

Plan

Produce better information

More workshops and training

A range of affordable housing options.

Report also includes a review of what housing support we have.

Going to need a minimum of 207 new living arrangements.

2009 transition	45	
OOB	44	
LD & Dementia	83	people over 40 (Noted that this must include everyone with dementia and not just people with downs)
People living in house not fit for purpose	23	

All plans linked to Councils strategic priorities

HOLD SCHEME

Policy - BH, Lesley & Ken to look at the national picture

Approach agreed  
Lesley also identified that out of hours contact has really delivered positive outcomes  
Positive comments about Paula's role  
Does board approve the strategy – **Yes**, however agreed to produce an accessible summary

### **Matters Arising**

Apologies from Abida not recorded in the minutes

### **PCP Sub Group**

Need a lead for this

#### **Action**

BH & AS to discuss

### **Housing Sub Group**

Need some managerial

Input.

#### **Action**

BH to look at.

### **Workforce Planning**

Need feedback on next steps

#### **Action**

Talk to Corporate Workforce Development Lead.

### **Transition event**

To be held again in January

Emphasis on the need for advanced planning

### **Supported Employment**

Launch 20/3

10am – 2pm at Robin Park Arena

### **Sub Groups**

Need to address that for any LDDF funded projects a representative must attend if the lead cannot.

### **Thankyou**

Andrea was thanked for all her contributions to the board and sub groups.

### **Next Meeting**

Wednesday 8<sup>th</sup> April, 10am-12.30pm- Wigan Soccer Dome